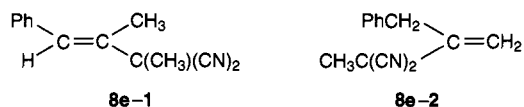


Additions and Corrections

Palladium Catalyzed Addition of Activated Methylene and Methyne Compounds to Allenes [*J. Am. Chem. Soc.* **1994**, *116*, 6019–6020]. YOSHINORI YAMAMOTO,* MOHAMMAD AL-MASUM, AND NAOKI ASAO

Page 6019, Table 1, entry 5: the structure of **8c** should be as follows (**8e-1** and **8e-2**).



The ratio of **7e**:**8e** was 57:43, and the ratio of **8e-1**:**8e-2** was 76:24.

JA955000R

Effects of Metal-Centered Reduction on the Structural, Electronic, and Coordination Properties of Nickel and Copper Octaethylisobacteriochlorins [*J. Am. Chem. Soc.* **1995**, *117*, 293–300]. MARK W. RENNER,* LARS R. FURENLID,* AND ALAN M. STOLZENBERG

Page 298: Due to a production error, Figures 10 and 11 were published incorrectly. The following figures are the corrected versions.

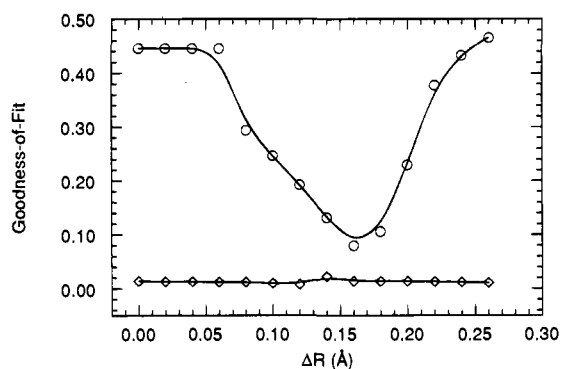


Figure 10. Goodness-of-fit indices for fits with two shells at fixed distance differences for $\text{Ni}^{\text{II}}(\text{OEiBC})$ (\diamond) and $\text{Ni}^{\text{I}}(\text{OEiBC})^-$ (\circ). Fits were carried out with $N_2 = N_1$ and $R_2 = R_1 + \Delta R$. Free parameters were N_1 , R_1 , σ_1^2 , and σ_2^2 .

JA955002B

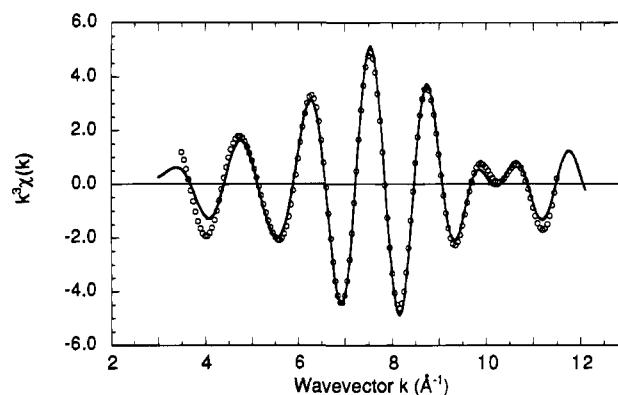


Figure 11. Fourier-filtered second-shell EXAFS oscillations (—) and nonlinear least squares fits (\circ) of $\text{Cu}^{\text{I}}(\text{OEiBC})^-$ without crown ether 2 Na at 2.89 Å, 8 C at 3.09 Å, and 4 C at 3.34 Å.